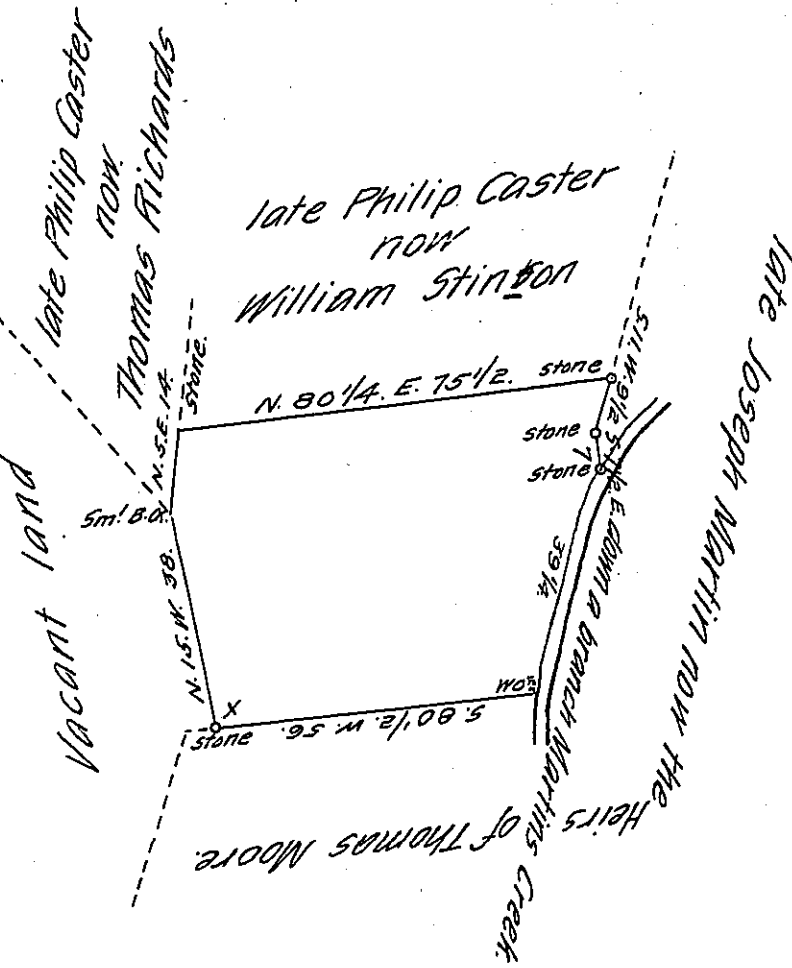


Bearing & distance  
down Martins Creek.

1. S. 20. W. 9 1/4

2. S. 13. W. 30

39 1/4



By virtue of a Warrant dated the 4<sup>th</sup> May 1790 Surveyed the 29<sup>th</sup> April 1803, to Thomas Moore the above described tract of Land situate in Lower Mount Bethel Township, Northampton County. Containing twenty Acres, one hundred and ten perches and the allowance of Six <sup>1</sup>/<sub>2</sub> Cent & 8<sup>1</sup>/<sub>2</sub> Cent.

Geo. Palmer, D. S.

To Samuel Cochran, Esquire,  
Surveyor General.

IN TESTIMONY that the above is a copy of the original remaining on file in the Department of Internal Affairs of Pennsylvania, made conformably to an Act of Assembly approved the 16th day of February, 1833, I have hereunto set my Hand and caused the Seal of said Department to be affixed at Harrisburg, this seventeenth day of November 1905.

*Isaac D. Bacon*  
Secretary of Internal Affairs.